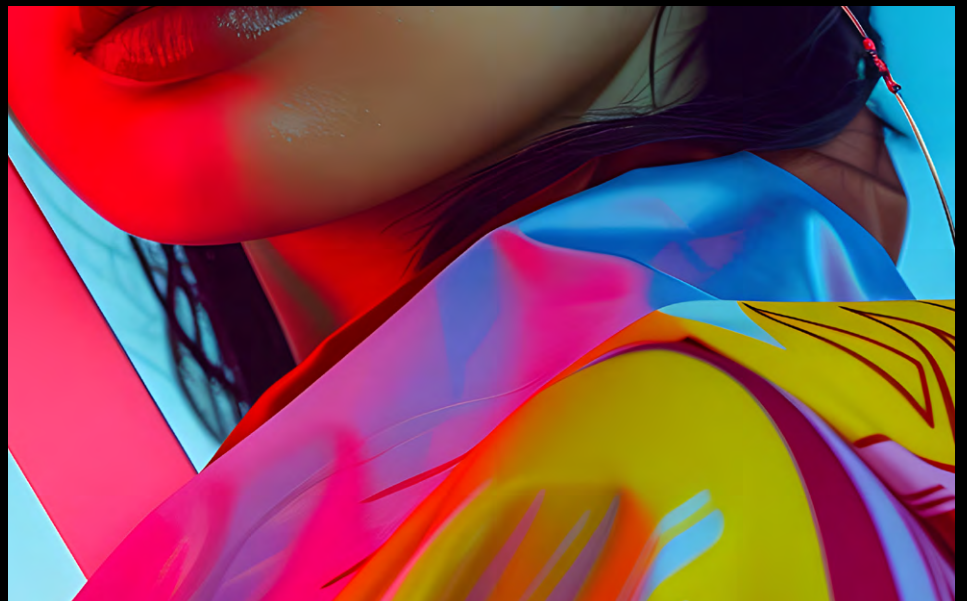


PROFESSIONAL DISPLAY SOLUTION

S



SOLUM
SMART
SIGNAGE



SOLUM

SOLUM SMART SIGNAGE

PROFESSIONAL DISPLAY SOLUTION

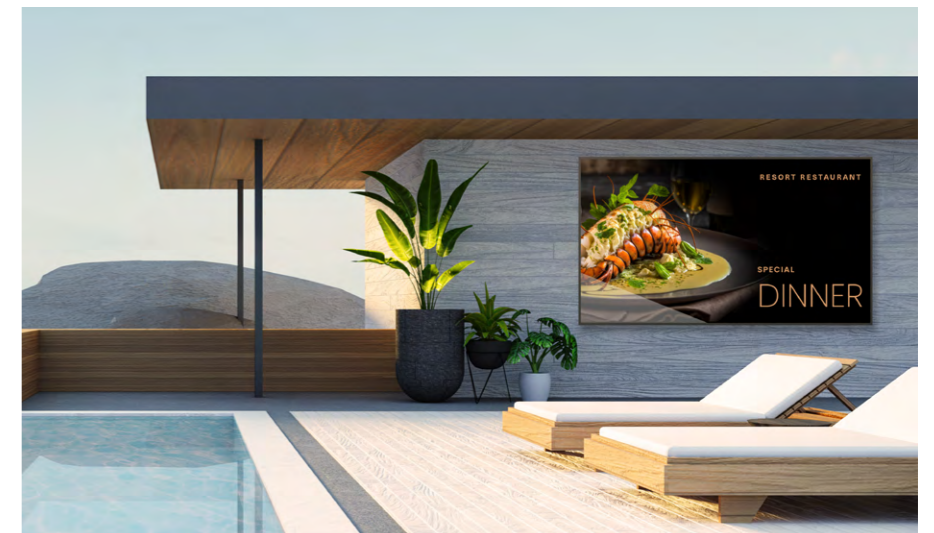
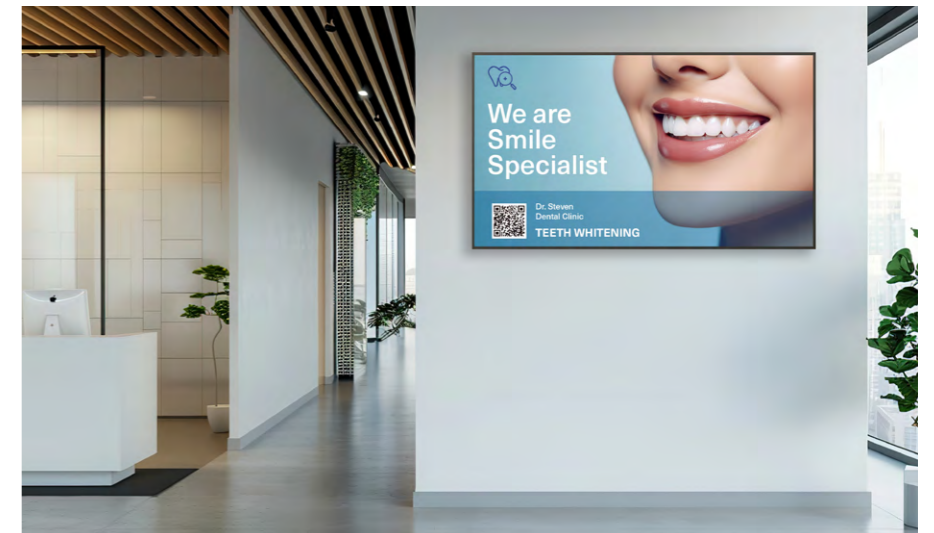
SOLUM





Professional display

Solum's display delivers eye-catching images to give vivid and clear information for customers



PROFESSIONAL DISPLAY SIGNAGE SOLUTION



32" FHD display

Digital Signage, Network & HDMI Support,
Sound 10 Wx2, Slim Depth with SOLUM CMS solution



43" UHD display

Digital Signage, Network & HDMI Support,
Sound 10 Wx2, Slim Depth with SOLUM CMS solution



55" UHD display

Digital Signage, Network & HDMI Support,
Sound 10 Wx2, Slim Depth with SOLUM CMS solution



65" UHD display

Digital Signage, Network & HDMI Support,
Sound 10 Wx2, Slim Depth with SOLUM CMS solution



75" UHD display

Digital Signage, Network & HDMI Support,
Sound 10 Wx2, with large size solution



86" UHD display

Digital Signage, Network & HDMI Support,
Sound 10 Wx2, with large size solution



PROFESSIONAL DISPLAY

SOLUTION FEATURE



Professional display

Solum's display delivers eye-catching images to give vivid and clear information for customers



Design & Performance

- Slim Depth : 32"-65" 38.9 mm
- Narrow Bezel For Signage Concept
- High Brightness : Over 500 cd/M²
- Easy Support to Landscape & Portrait
- Long Life Reliability : 24 Hour / 7 Days
- Android O/S

Simple Installation

- Support to Wall-mount For VESA
- Support Available Basic & Swivel Type
- Support to Design Customized Option

Compatible network interface

- Ethernet & Wi-Fi 2.4 GHz / 5.0 GHz
- Support for RS232 Control

Special Feature for customer

- Built In Launcher for Compatibility
- Support API for Customer CMS
- NDI Certification (* Depend on the Model)
- Video Multi Decoding (* Depend on the Model)
4K UHD + 4K UHD Dual Decoding

SPECIFICATION

DIGITAL SIGNAGE 32" FHD (S32A)



DISPLAY

| | |
|---------------------|-----------------------------------|
| Size | 32" |
| Resolution | 1,920 x 1,080 (FHD) |
| W*H Ratio | 1.77 (16:9) |
| Luminance (Typ.) | 500 cd/m ² |
| Orientation | Landscape/Portrait |
| Contrast Ratio | 4,000:1 |
| Viewing Angle (H/V) | 178° / 178° |
| Response Time | 8 ms |
| Active Area (HxV) | 698.4 x 392.9 mm / 27.5 x 15.5 in |
| Color Gamut | 85% |
| Backlight type | E-LED |
| Life Time (LED) | 50,000 Hrs |

MECHANICAL

| | |
|--------------------------|---|
| SET Dimensions | 724.6 x 419.8 x 40 mm 28.5 x 16.5 x 1.6 in |
| VESA Mount | 150 x 200 mm |
| SET Weight | 5.4 kg / 11.9 lbs. |
| Packing Dimensions | 795 x 520 x 115 mm 313. x 20.5 x 4.5 in |
| Packing Weight | 7.3 kg / 16.1 lbs. |
| Bezel Width (U/L/R/B mm) | 11.6 (even) |

SYSTEM

| | |
|---------------|--|
| OS | Android 9.0 |
| CPU | Quad-core ARM Cortex-A35 |
| GPU | ARM Mali-G31 MP2 |
| RAM | 2 GB DDR4 |
| Storage (ROM) | 8 GB eMMC |
| Network | Ethernet (RJ45) Wi-Fi (2.4 G / 5 G) |
| Connectivity | USB 2.0 Type A 2 EA , RS232C |
| HDMI / DP | HDMI (3) |
| Speaker | 10 W + 10 W |

POWER REQUIREMENTS

| | |
|-------------------|--------------------------|
| Power Consumption | 70 W (Typ.) |
| Standby Power | ≤0.5 W |
| Power Source | AC 110-240 V @50 / 60 Hz |

ENVIRONMENTAL

| | |
|-----------------------|----------------------|
| Operating Temperature | 0-40°C 32-104°F |
| Operating Humidity | 20-80% |
| Storage Temperature | -20-60°C -4-140°F |

DIGITAL SIGNAGE 43" UHD (S43A)



DISPLAY

| | |
|---------------------|-----------------------------------|
| Size | 43" |
| Resolution | 3,840 x 2,160 (UHD) |
| W*H Ratio | 1.77 (16:9) |
| Luminance (Typ.) | 500 cd/m ² |
| Orientation | Landscape/Portrait |
| Contrast Ratio | 4,000:1 |
| Viewing Angle (H/V) | 178° / 178° |
| Response Time | 8 ms |
| Active Area (HxV) | 941.2 x 529.4 mm / 37.1 x 20.8 in |
| Color Gamut | 85% |
| Backlight type | E-LED |
| Life Time (LED) | 50,000 Hrs |

MECHANICAL

| | |
|--------------------------|---|
| SET Dimensions | 967.4 x 555.9 x 40 mm 38.1 x 21.9 x 1.6 in |
| VESA Mount | 400 x 300 mm |
| SET Weight | 9.1 kg / 20.1 lbs. |
| Packing Dimensions | 1,075 x 652 x 144 mm 42.3 x 25.7 x 5.7 in |
| Packing Weight | 12.7 kg / 28.0 lbs. |
| Bezel Width (U/L/R/B mm) | 11.5 (even) |

SYSTEM

| | |
|---------------|---------------------------------------|
| OS | Android 9.0 |
| CPU | Quad-core ARM Cortex-A35 |
| GPU | ARM Mali-G31 MP2 |
| RAM | 2 GB DDR4 |
| Storage (ROM) | 8 GB eMMC |
| Network | Ethernet (RJ45) Wi-Fi (2.4 G / 5G) |
| Connectivity | USB 2.0 (2), RS232C |
| HDMI / DP | HDMI (3) |
| Speaker | 10 W + 10 W |

POWER REQUIREMENTS

| | |
|-------------------|--------------------------|
| Power Consumption | 120 W (Typ.) |
| Standby Power | ≤0.5 W |
| Power Source | AC 110-240 V @50 / 60 Hz |

ENVIRONMENTAL

| | |
|-----------------------|----------------------|
| Operating Temperature | 0-40°C 32-104°F |
| Operating Humidity | 20-80% |
| Storage Temperature | -20-60°C -4-140°F |

SPECIFICATION

DIGITAL SIGNAGE 55" UHD (S55A)



DISPLAY

| | |
|---------------------|-------------------------------------|
| Size | 55" |
| Resolution | 3,840 x 2,160 (UHD) |
| W*H Ratio | 1.77 (16:9) |
| Luminance (Typ.) | 500 cd/m ² |
| Orientation | Landscape/Portrait |
| Contrast Ratio | 4,000:1 |
| Viewing Angle (H/V) | 178° / 178° |
| Response Time | 8 ms |
| Active Area (HxV) | 1,219.6 x 691.9 mm / 48.0 x 27.2 in |
| Color Gamut | 85% |
| Backlight type | E-LED |
| Life Time (LED) | 50,000 Hrs |

MECHANICAL

| | |
|--------------------------|---|
| SET Dimensions | 1,239.7 x 712.5 x 38.6 mm 48.8 x 28.1 x 1.5 in |
| VESA Mount | 400 x 400 mm |
| SET Weight | 17.6 kg / 38.8 lbs. |
| Packing Dimensions | 1,390 x 850 x 136 mm 54.7 x 33.5 x 5.4 in |
| Packing Weight | 22.9 kg / 50.5 lbs. |
| Bezel Width (U/L/R/B mm) | 13.3 / 13.3 / 13.3 / 15.3 |

SYSTEM

| | |
|---------------|--|
| OS | Android 9.0 |
| CPU | Quad-core ARM Cortex-A35 |
| GPU | ARM Mali-G31 MP2 |
| RAM | 2 GB DDR4 |
| Storage (ROM) | 8 GB eMMC |
| Network | Ethernet (RJ45) Wi-Fi (2.4 G / 5 G) |
| Connectivity | USB 2.0 (2), RS232C |
| HDMI / DP | HDMI (3) |
| Speaker | 10 W + 10 W |

POWER REQUIREMENTS

| | |
|-------------------|--------------------------|
| Power Consumption | 140 W (Typ.) |
| Standby Power | ≤0.5 W |
| Power Source | AC 110-240 V @50 / 60 Hz |

ENVIRONMENTAL

| | |
|-----------------------|----------------------|
| Operating Temperature | 0-40°C 32-104°F |
| Operating Humidity | 20-80% |
| Storage Temperature | -20-60°C -4-140°F |

DIGITAL SIGNAGE 65" UHD (S65A)



DISPLAY

| | |
|---------------------|-------------------------------------|
| Size | 65" |
| Resolution | 3,840 x 2,160 (UHD) |
| W*H Ratio | 1.77 (16:9) |
| Luminance (Typ.) | 500 cd/m ² |
| Orientation | Landscape/Portrait |
| Contrast Ratio | 4,000:1 |
| Viewing Angle (H/V) | 178° / 178° |
| Response Time | 8 ms |
| Active Area (HxV) | 1,438.5 x 815.0 mm / 56.6 x 32.1 in |
| Color Gamut | 85% |
| Backlight type | E-LED |
| Life Time (LED) | 50,000 Hrs |

MECHANICAL

| | |
|--------------------------|---|
| SET Dimensions | 1,459.2 x 837.1 x 38.9 mm 57.4 x 33.0 x 1.5 in |
| VESA Mount | 400 x 400 mm |
| SET Weight | 25.3 kg / 55.8 lbs. |
| Packing Dimensions | 1,640 x 990 x 164 mm 64.6 x 39.0 x 6.5 in |
| Packing Weight | 34.6 kg / 76.3 lbs. |
| Bezel Width (U/L/R/B mm) | 14.0 / 14.0 / 14.0 / 16.0 |

SYSTEM

| | |
|---------------|--|
| OS | Android 9.0 |
| CPU | Quad-core ARM Cortex-A35 |
| GPU | ARM Mali-G31 MP2 |
| RAM | 2 GB DDR4 |
| Storage (ROM) | 8 GB eMMC |
| Network | Ethernet (RJ45) Wi-Fi (2.4 G / 5 G) |
| Connectivity | USB 2.0 (2), RS232C |
| HDMI / DP | HDMI (3) |
| Speaker | 10W + 10W |

POWER REQUIREMENTS

| | |
|-------------------|--------------------------|
| Power Consumption | 150 W (Typ.) |
| Standby Power | ≤0.5 W |
| Power Source | AC 110-240 V @50 / 60 Hz |

ENVIRONMENTAL

| | |
|-----------------------|----------------------|
| Operating Temperature | 0-40°C 32-104°F |
| Operating Humidity | 20-80% |
| Storage Temperature | -20-60°C -4-140°F |

SPECIFICATION

DIGITAL SIGNAGE 75" UHD (S75A)



DISPLAY

| | |
|---------------------|-------------------------------------|
| Size | 75" |
| Resolution | 3,840 x 2,160 (UHD) |
| W*H Ratio | 1.77 (16:9) |
| Luminance (Typ.) | 800 cd/m ² |
| Orientation | Landscape/Portrait |
| Contrast Ratio | 900:1 |
| Viewing Angle (H/V) | 178° / 178° |
| Response Time | 8 ms |
| Active Area (HxV) | 1,649.7 x 927.9 mm / 64.9 x 36.5 in |
| Color Gamut | NTSC 72% |
| Backlight type | D-LED |
| Life Time (LED) | 50,000 Hrs |

MECHANICAL

| | |
|--------------------------|--------------------------|
| SET Dimensions | 1681.66 x 959.94 x 55 mm |
| | 66.2 x 37.8 x 2.2 in |
| VESA Mount | 600 x 400 mm |
| SET Weight | 29 kg / 63.9 lbs. |
| Packing Dimensions | 1,883 x 1,140 x 186 mm |
| | 74.1 x 44.9 x 7.3 in |
| Packing Weight | 40.5 kg / 89.3 lbs. |
| Bezel Width (U/L/R/B mm) | 13.0 (even) |

SYSTEM

| | |
|---------------|---|
| OS | Android 11 |
| CPU | Quad core ARM Cortex-A73 + Quad core Cortex-A53 |
| GPU | ARM Mali-G52 MP8 |
| RAM | 4 GB DDR4 |
| Storage (ROM) | 32 GB eMMC |
| Network | Ethernet (RJ45) |
| | Wi-Fi (2.4 G / 5G) |
| Connectivity | USB 2.0 (2), RS232C |
| HDMI / DP | HDMI (2) |
| Speaker | 10 W + 10 W |

POWER REQUIREMENTS

| | |
|-------------------|-------------------------|
| Power Consumption | 305 W (Typ.) |
| Standby Power | ≤0.5 W |
| Power Source | AC 100-240 V@50 / 60 Hz |

ENVIRONMENTAL

| | |
|-----------------------|----------|
| Operating Temperature | 0-40°C |
| | 32-104°F |
| Operating Humidity | 10-90% |
| Storage Temperature | -20-60°C |
| | -4-140°F |

DIGITAL SIGNAGE 86" UHD (S86A)



DISPLAY

| | |
|---------------------|---------------------------------------|
| Size | 86" |
| Resolution | 3,840 x 2,160 (UHD) |
| W*H Ratio | 1.77 (16:9) |
| Luminance (Typ.) | 800 cd/m ² |
| Orientation | Landscape/Portrait |
| Contrast Ratio | 1,000:1 |
| Viewing Angle (H/V) | 178° / 178° |
| Response Time | 8 ms |
| Active Area (HxV) | 1,895.0 x 1,066.0 mm / 74.6 x 42.0 in |
| Color Gamut | NTSC 72% |
| Backlight type | D-LED |
| Life Time (LED) | 50,000 Hrs |

MECHANICAL

| | |
|--------------------------|---------------------------|
| SET Dimensions | 1928.04 x 1098.96 x 57 mm |
| | 75.9 x 43.3 x 2.2 in |
| VESA Mount | 600 x 400 mm |
| SET Weight | 49 kg / 108.0 lbs. |
| Packing Dimensions | 2,123 x 1,247 x 225 mm |
| | 83.6 x 49.1 x 8.9 in |
| Packing Weight | 64 kg / 141.1 lbs. |
| Bezel Width (U/L/R/B mm) | 13.0 (even) |

SYSTEM

| | |
|---------------|---|
| OS | Android 11 |
| CPU | Quad core ARM Cortex-A73 + Quad core Cortex-A53 |
| GPU | ARM Mali-G52 MP8 |
| RAM | 4 GB DDR4 |
| Storage (ROM) | 32 GB eMMC |
| Network | Ethernet (RJ45) |
| | Wi-Fi (2.4 G / 5G) |
| Connectivity | USB 2.0 (2), RS232C |
| HDMI / DP | HDMI (2) |
| Speaker | 10 W + 10 W |

POWER REQUIREMENTS

| | |
|-------------------|-------------------------|
| Power Consumption | 395 W (Typ.) |
| Standby Power | ≤0.5 W |
| Power Source | AC 100-240 V@50 / 60 Hz |

ENVIRONMENTAL

| | |
|-----------------------|----------|
| Operating Temperature | 0-40°C |
| | 32-104°F |
| Operating Humidity | 10-90% |
| Storage Temperature | -20-60°C |
| | -4-140°F |

SOLUM

www.solum-group.com

Frankfurter Str. 10-14
65760 Eschborn, Germany